

MK019
0709
0001



MR MECHANICAL REGISTER

INSTRUCTION MANUAL

IMPORTANT INFORMATION



PLEASE READ THIS INFORMATION CAREFULLY BEFORE USE!

Ensure that the fluid supply to the meter is Isolated and disconnected, and the line pressure is released before disassembly.

To prevent damage to the meter, slowly fill the system with fluid (this will prevent damage caused by air purge).

Note: Failure to do this could damage the meter.

Note: For pump applications, turn off the pump at the end of each day.

REGISTER ASSEMBLY REMOVAL



Disconnect the fluid line and release line pressure before disassembly.

Refer to the exploded parts diagram Fig.2 for item numbers and spare parts kits.



CAUTION

Make sure the legs located on top of the accumulative total wheels are not moved or disturbed during the removal of register cap or register assembly.

Carefully place the register on a flat surface to ensure accumulative total is not moved accidentally.

1) Remove the four register cap screws (10), and remove the register cap (3).

2) Remove 4 Allen screws (4) and washers (12) holding the register assembly (2) to the housing (1).

3) Carefully pull back the reset spring (9) towards the register (2) and carefully remove the register assembly (2)

Rotate Register Assembly

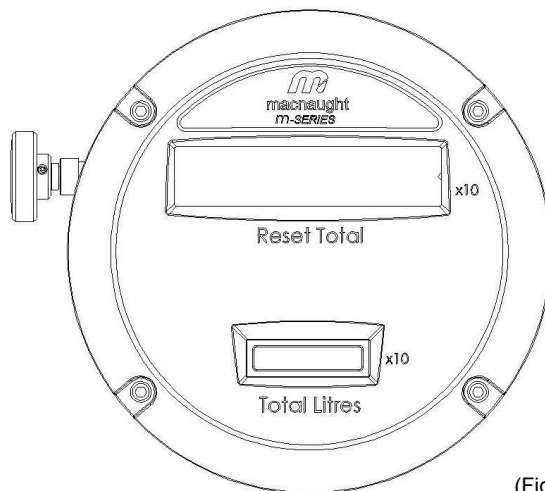
4) Remove the 4 Allen screws securing the Housing to the meter cap.

5) Rotate the housing (1) to the desired location, position the gasket correctly and secure the housing to the meter cap with the 4 Allen screws.

REPLACE RESET BUSH 'O'RING

6) Use a 1.5mm Allen key and remove the reset button (5) from the adaptor shaft (7).

7) Remove adaptor shaft (7) from bush (13). Carefully remove old 'o' ring (6) from bush (13)



(Fig 1)

NOTE: Be careful not to scratch or damage 'o'ring groove when removing 'o'ring (6)

8) Carefully insert the new 'o'ring (6) into the groove.

9) Add a light coat of grease to adaptor shaft (7). Carefully slide the shaft through bush (13), and re-fit reset button (5)

REASSEMBLY



CAUTION

Careful not to move the legs located on top of the accumulative total wheels during assembly.

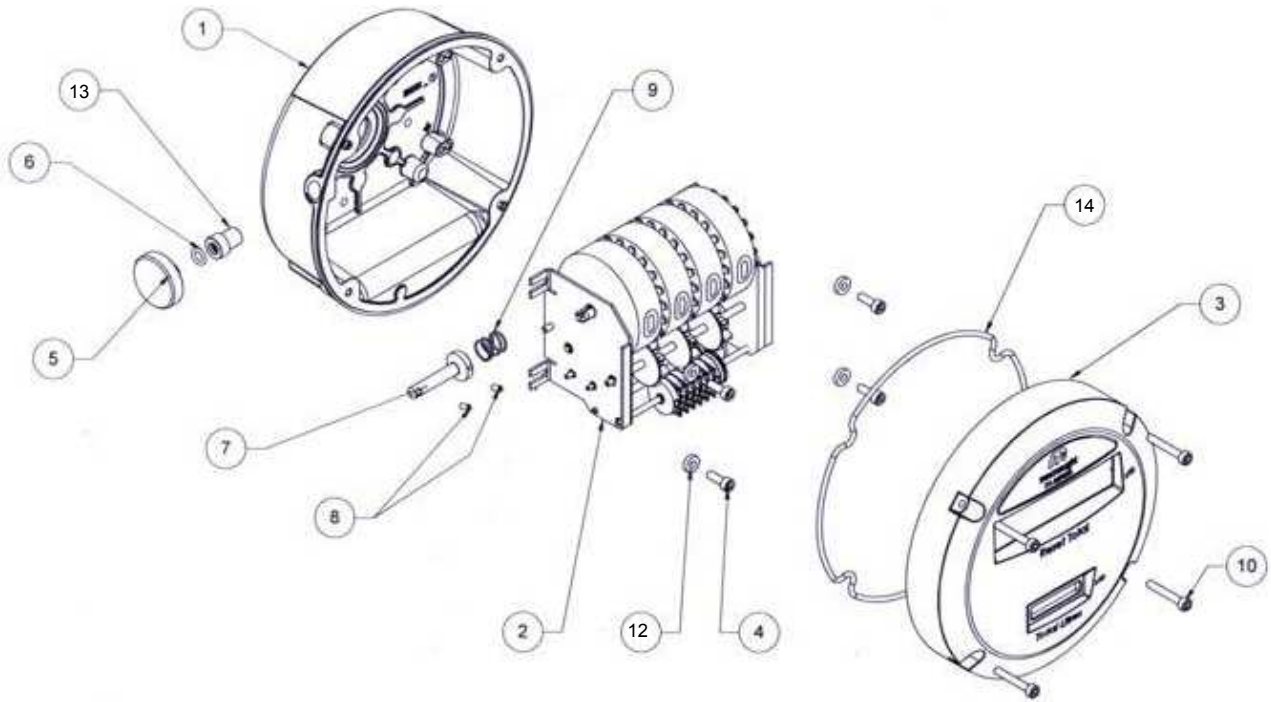
1) Place the spring (9) onto the reset shaft on the register (2). Hold the spring against the side of the register, and carefully place the register (2) into the housing (1).

2) Hold the register and housing firmly with one hand. Tilt the assembly on its side and carefully replace the 4 x Allen screws and washers (4,12)

Note : The legs on the accumulative total must face up towards the register cap (3)

3) Secure the register Cap (3) to housing (1) with Allen screws (10)

PARTS DIAGRAM



(Fig 2)

SPARE PARTS LIST

			ORDER FOR REPLACEMENT		
ITEM	PART NO	No. off	PART/SET	KIT REF	DESCRIPTION
			MR-1K	A	Seal Kit
1	MK021	1	N/A		HOUSING
2	MK030	1	MK030s		MECHANICAL REGISTER
3	MK002A	1	MK002As (INCL ITEM 14)		CAP ASSEMBLY
4	MS119	8	MS119s (INCL ITEM 12)		BOLT
5	MK014	1	MK014s		RESET KNOB
6	BS010	1		A	O'RING
7	MK013SP	1	MK013s		ADAPTOR SHAFT
8	MS146	2		A	GRUB SCREW
9	MK020	1		A	SPRING
10	ER029	4	ER029s		SCREW SET
11	MS739	1		A	GASKET (not shown)
12	MK027	4	order MS119s		SPACER
13	MK037	1	N/A		BUSH
14	MK017	1		A	O'RING



Macnaught Pty Ltd
 PO Box 90 Arncliffe NSW 2205 Australia
 Telephone (02) 9567 0401
 Facsimile (02) 9597 7773
 Email: sales@macnaught.com.au
 Web: www.macnaught.com.au